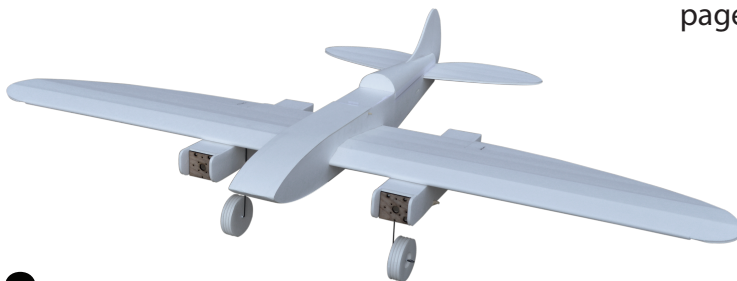




www.flitetest.com



# FT Cruiser

## Recommended electronics:

Park 400, 810 kv minimum

18-30 amp

2200 mAH 3s (20c)

(4 - 6) 9 gram servos

black = cut

red = score 50%

blue = lightly crease

## Throws:

10° deflection (elevator)

19° (rudder/aileron) Expo 30%

## Weight Without Battery

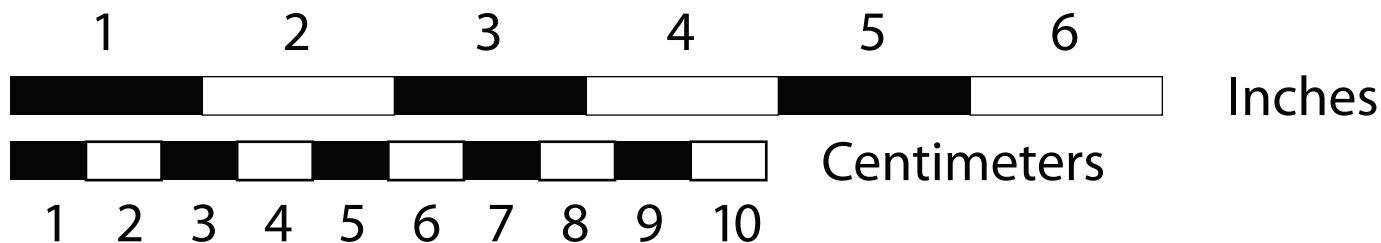
1 lb 11 oz (766g)

## Prop:

8 X 6 - 9 X 4.7 Slow Fly

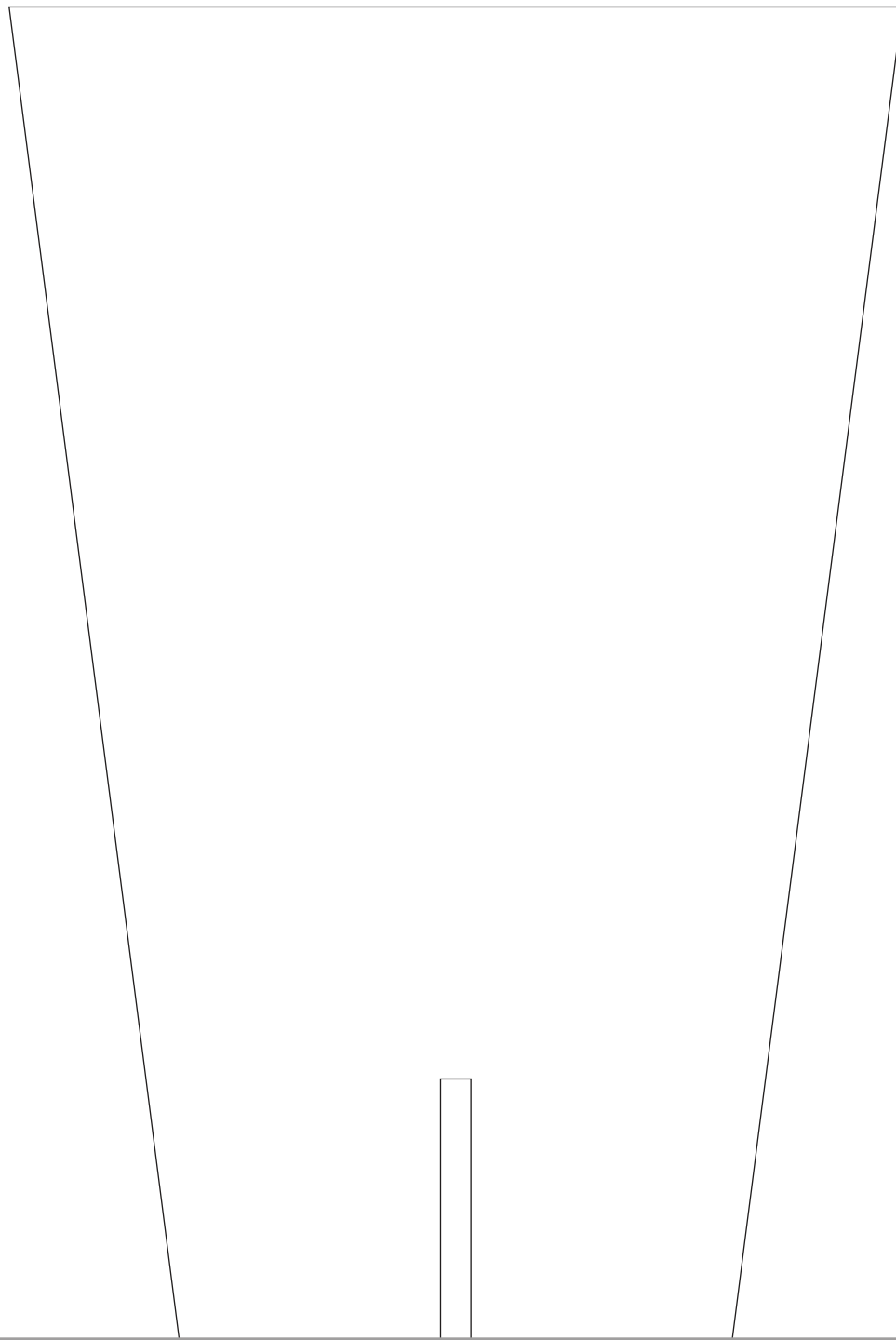
Tiled plans dimensions: 3 x 11

1	2	3	4	5	6	7	8	9	10	11
12	13	14	15	16	17	18	19	20	21	22
23	24	25	26	27	28	29	30	31	32	33

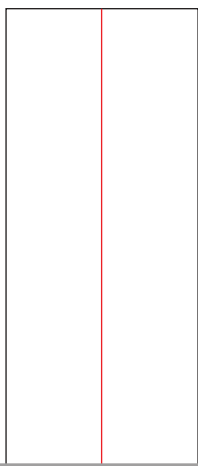


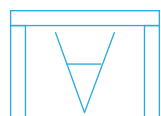
Design By: Josh Bixler

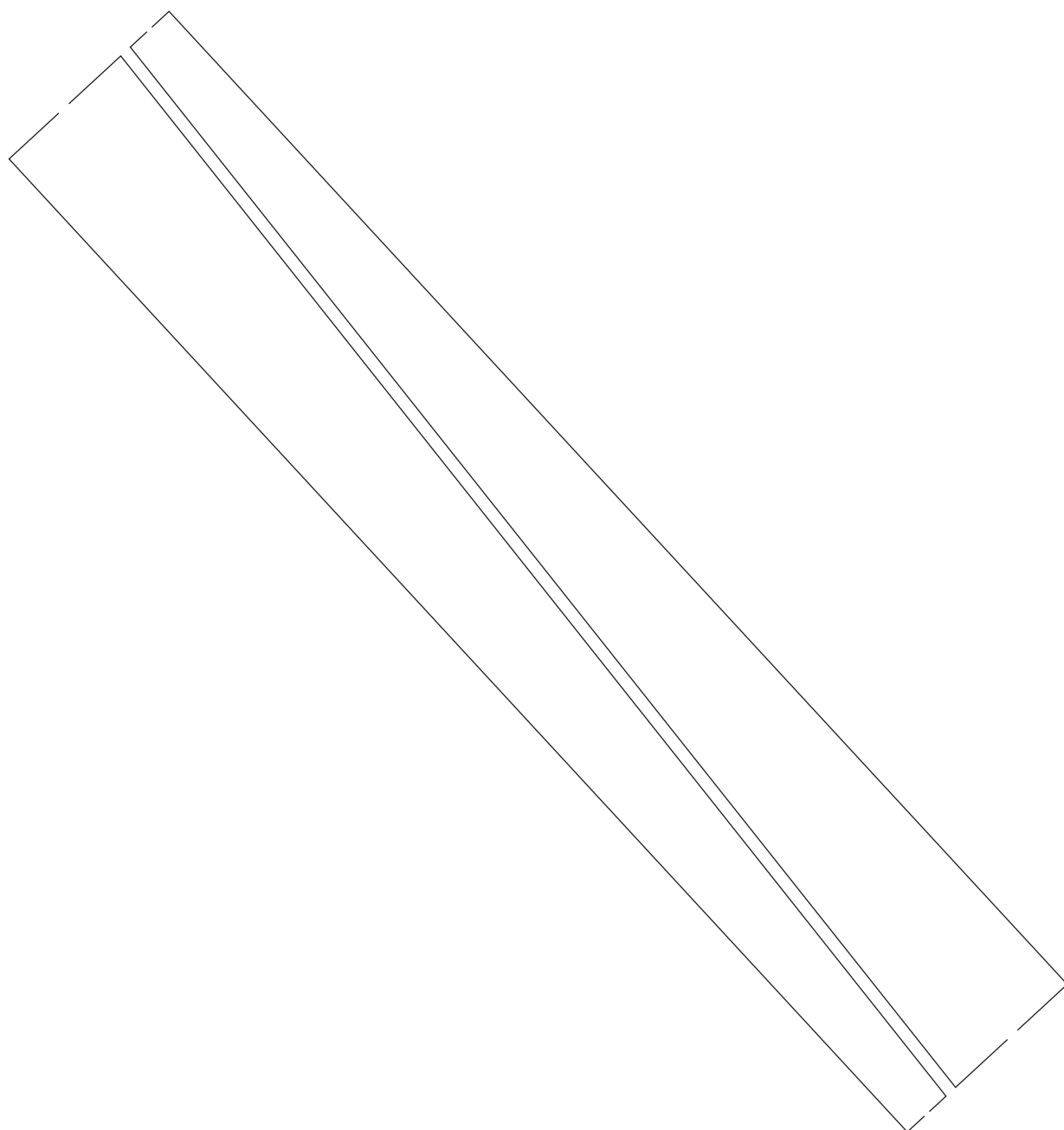
turtle deck (posterboard)



spar (x2)

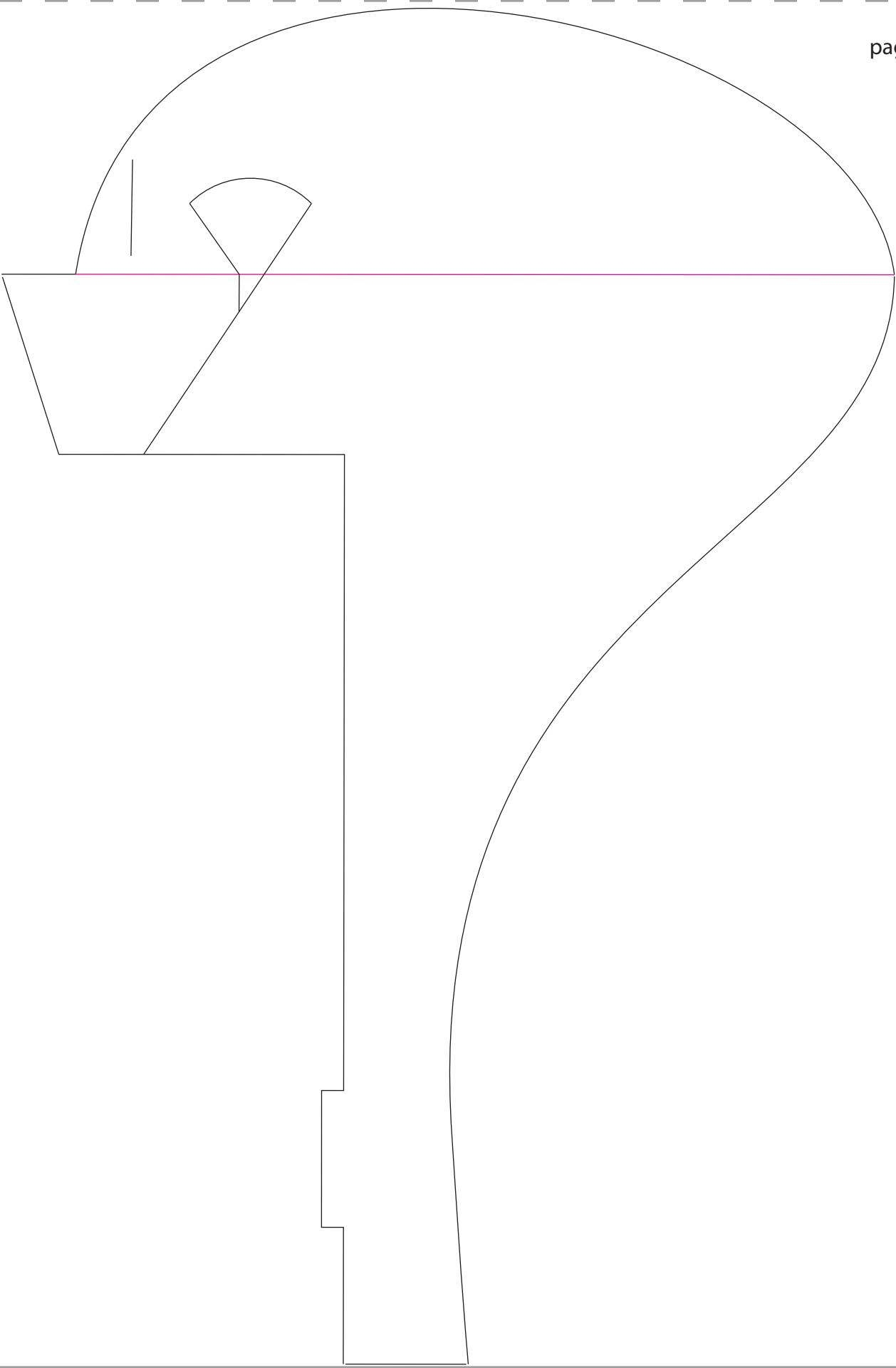


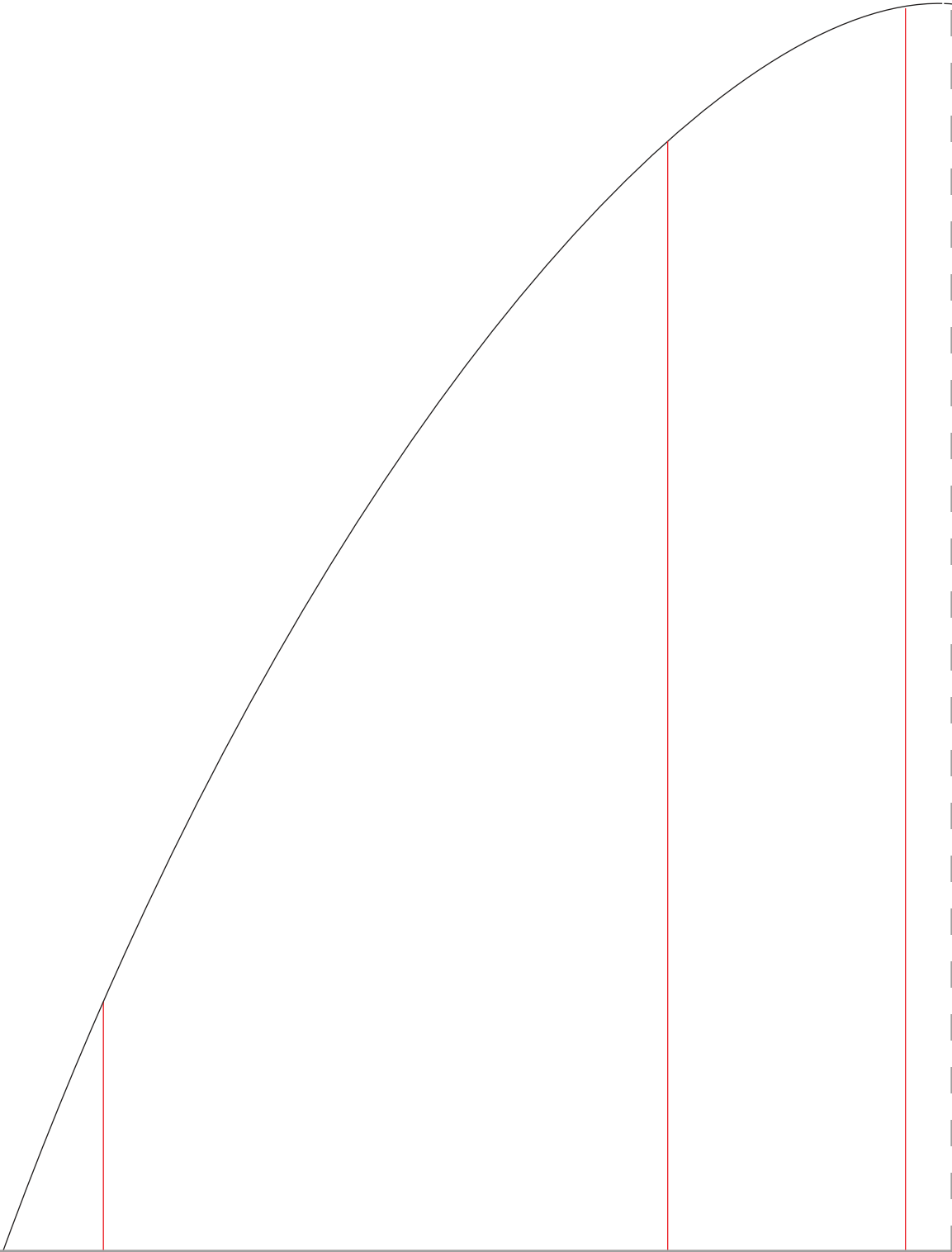


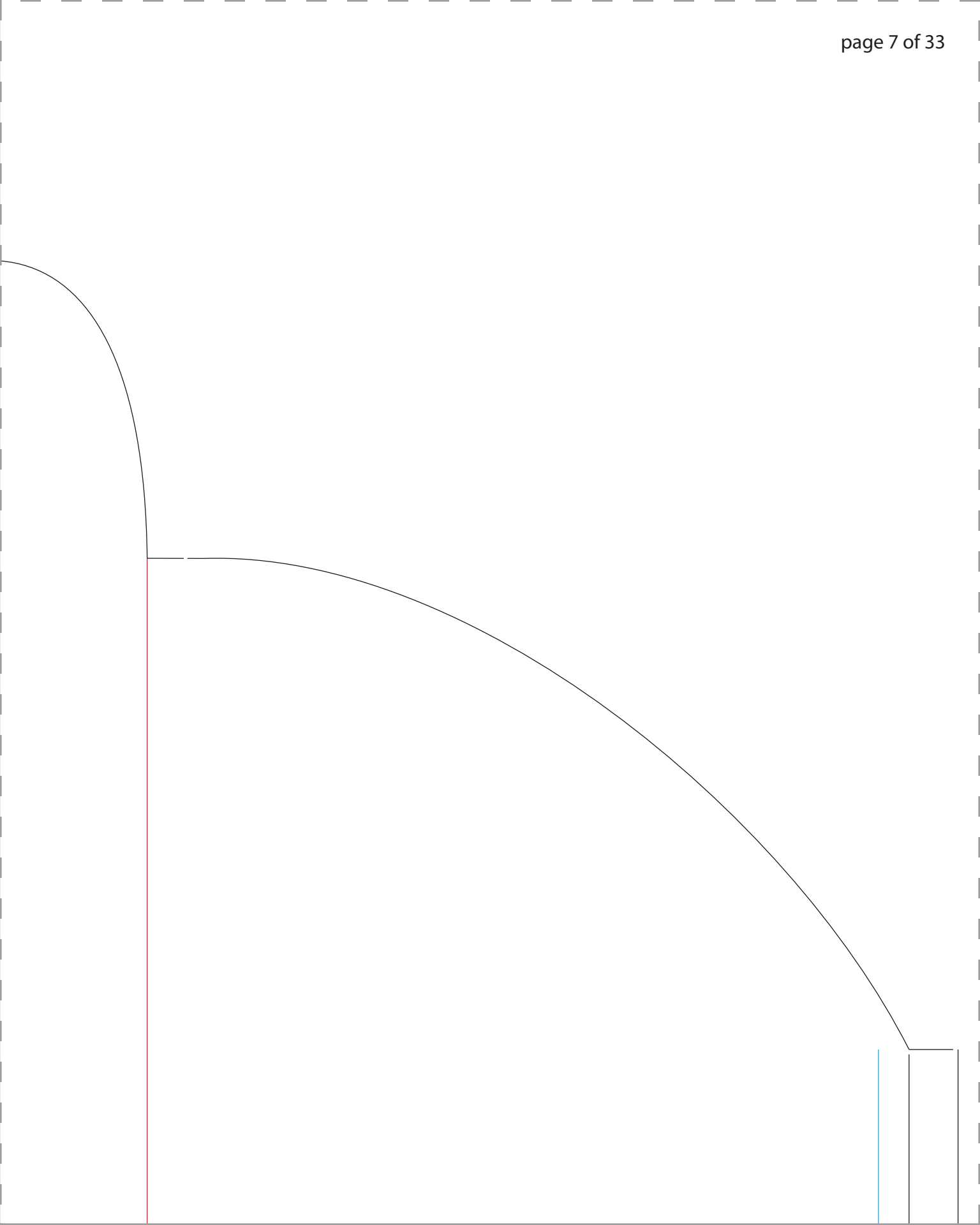


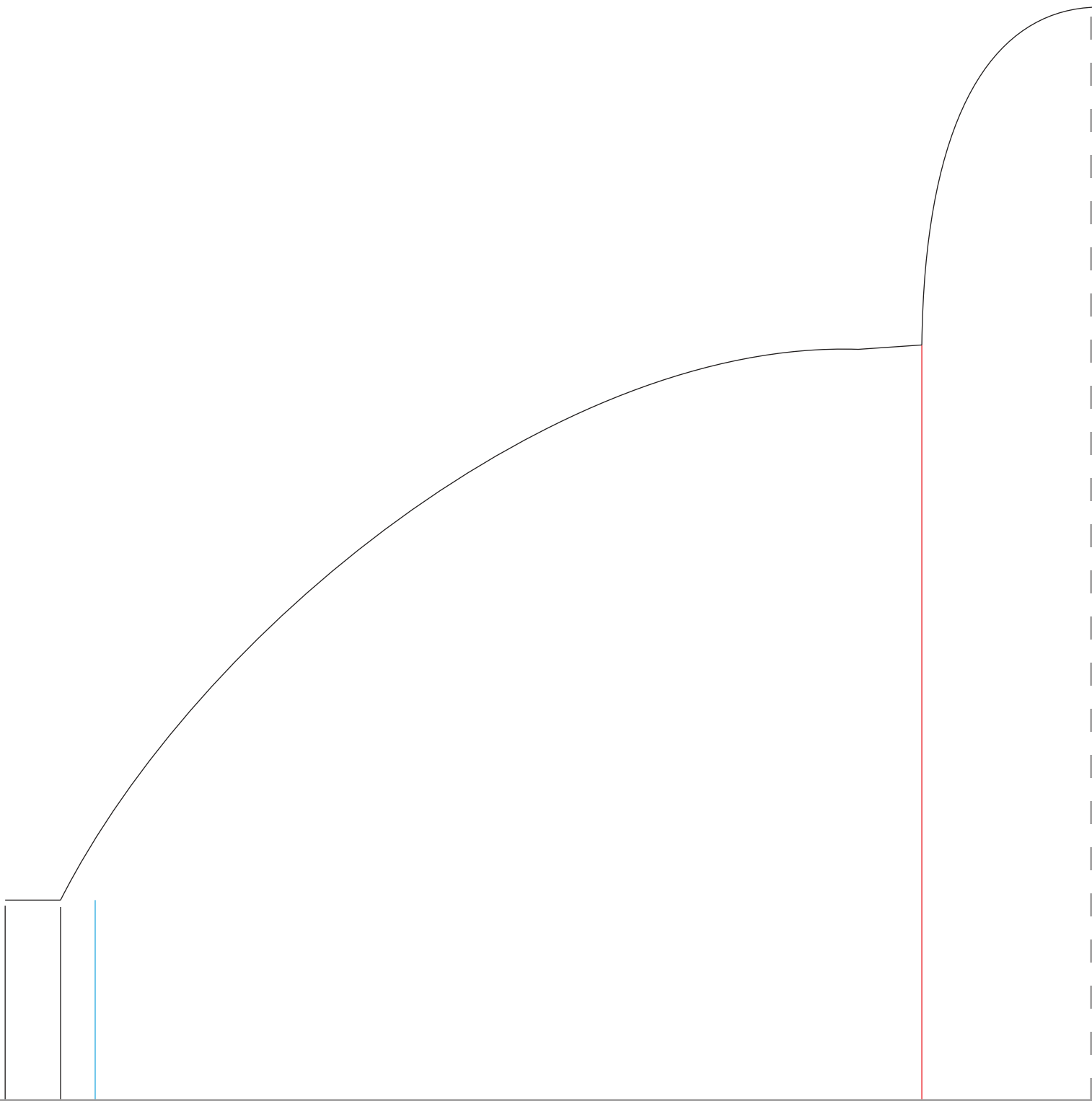
nose pod connectors (posterboard)



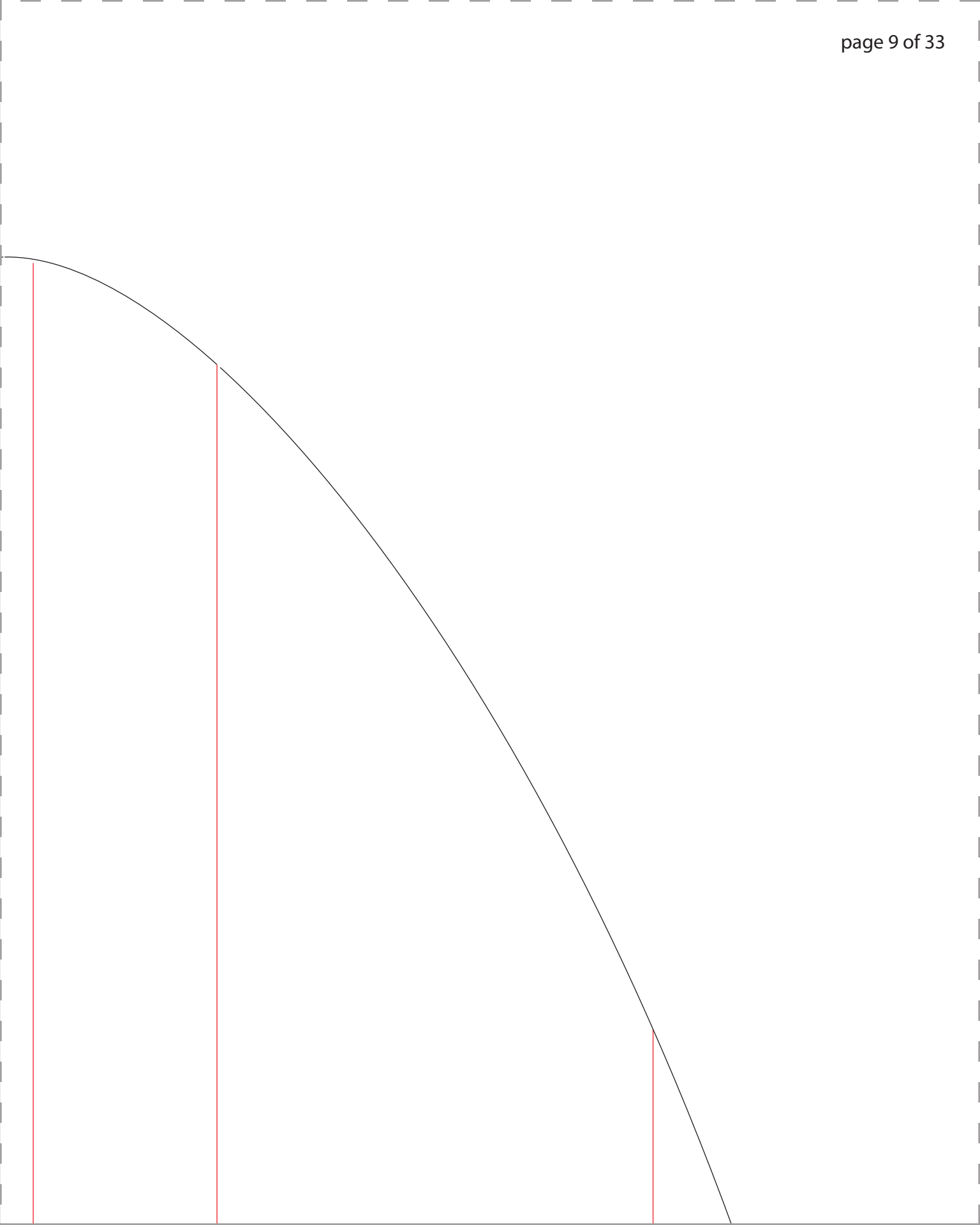


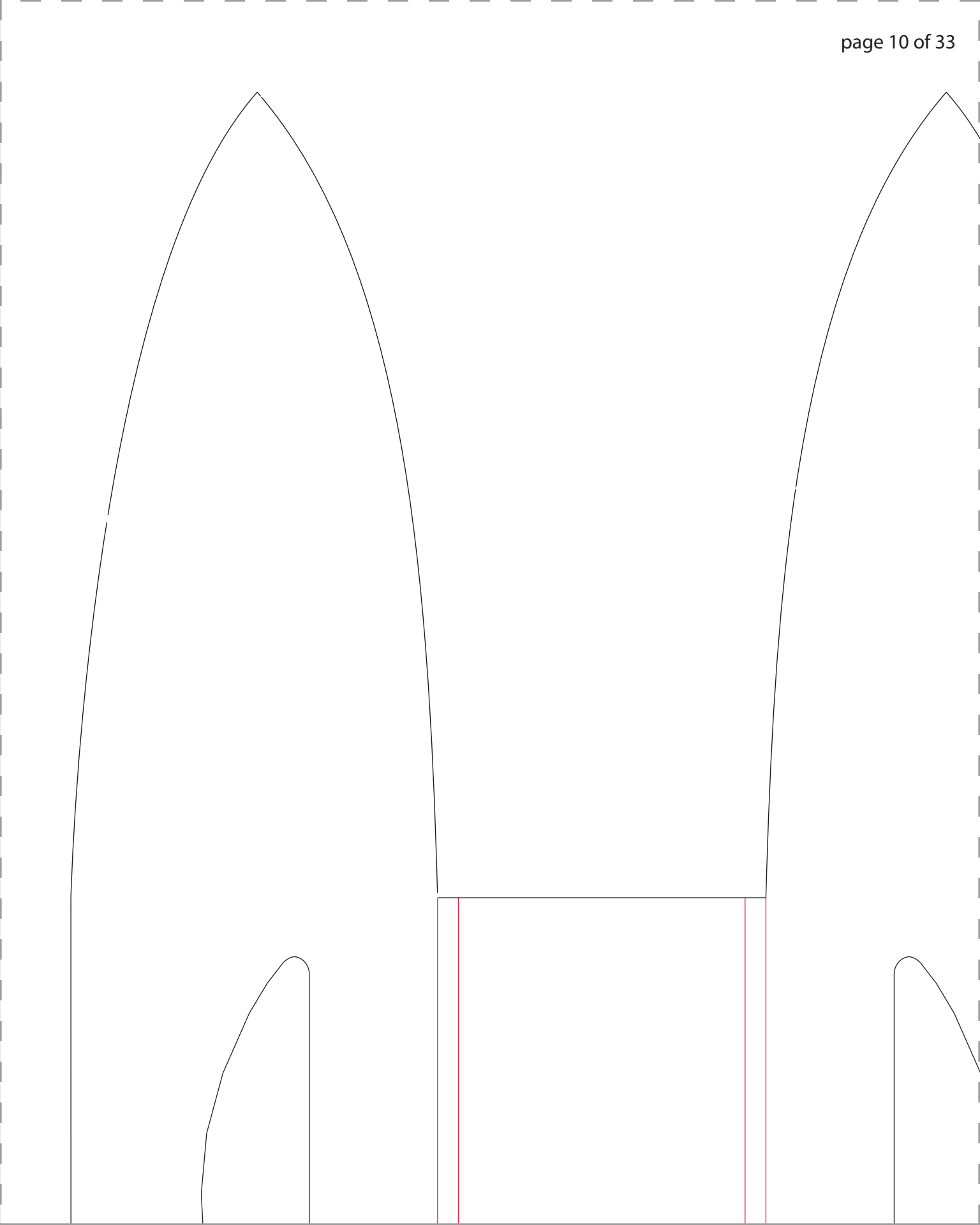


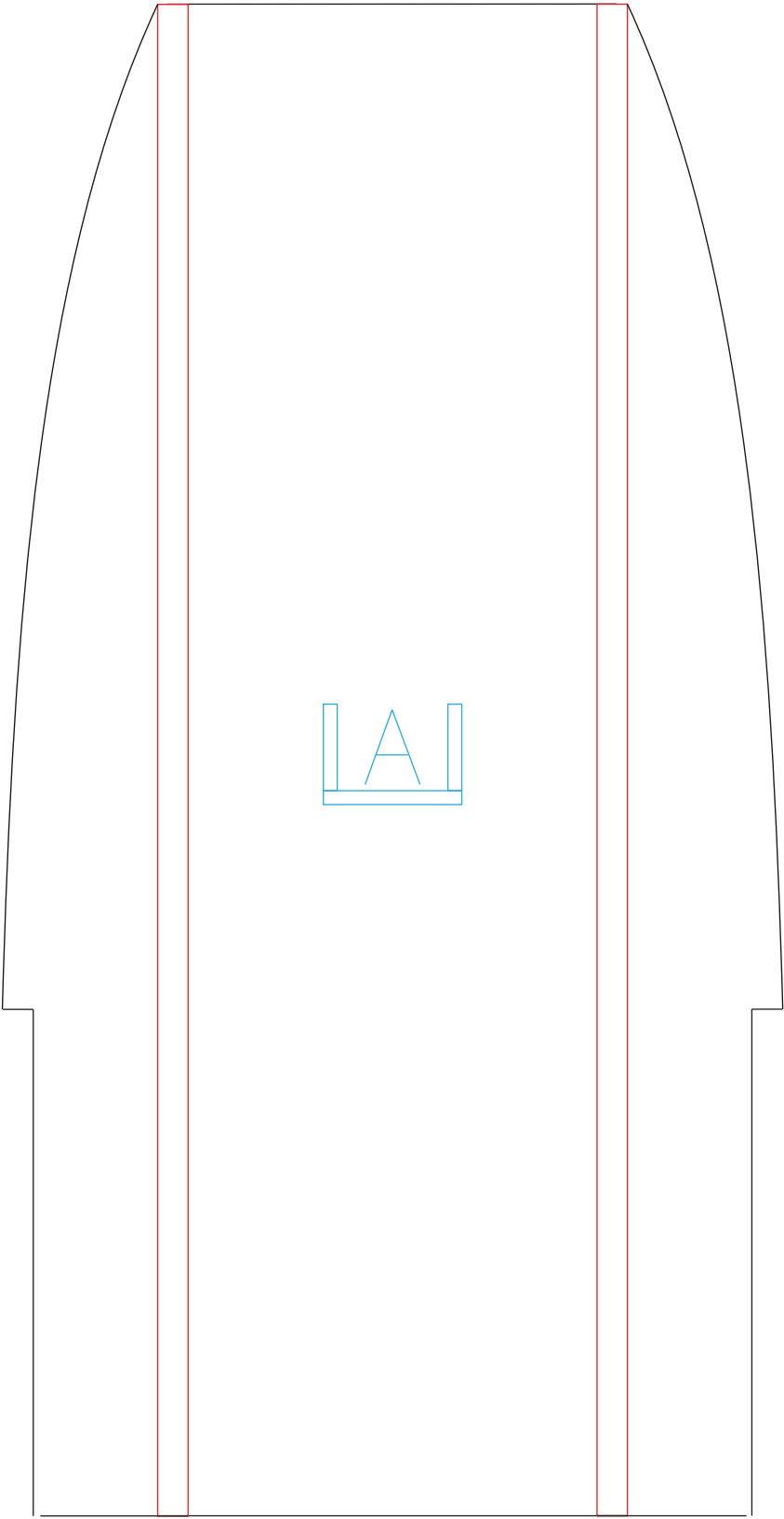




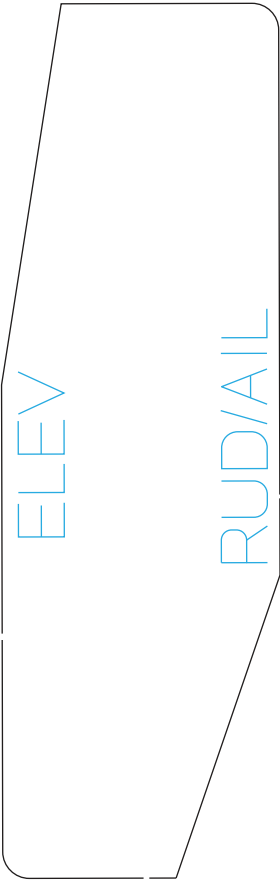








Powerpods (x2)

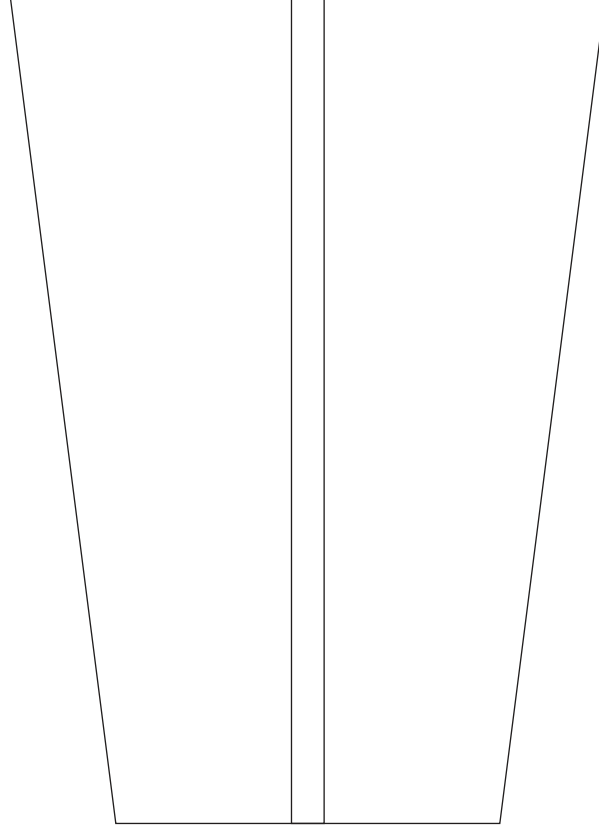


o

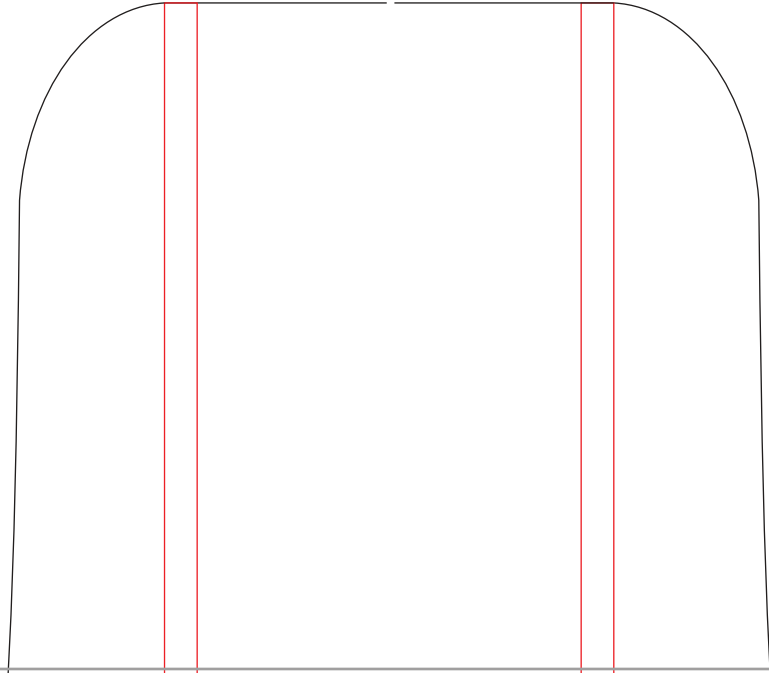
o

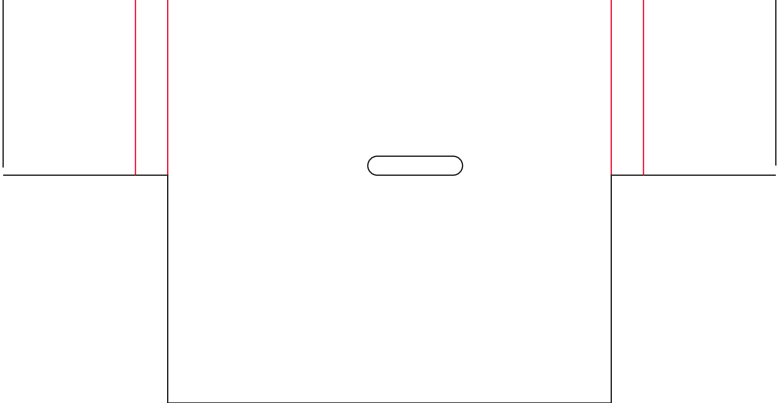
o

o

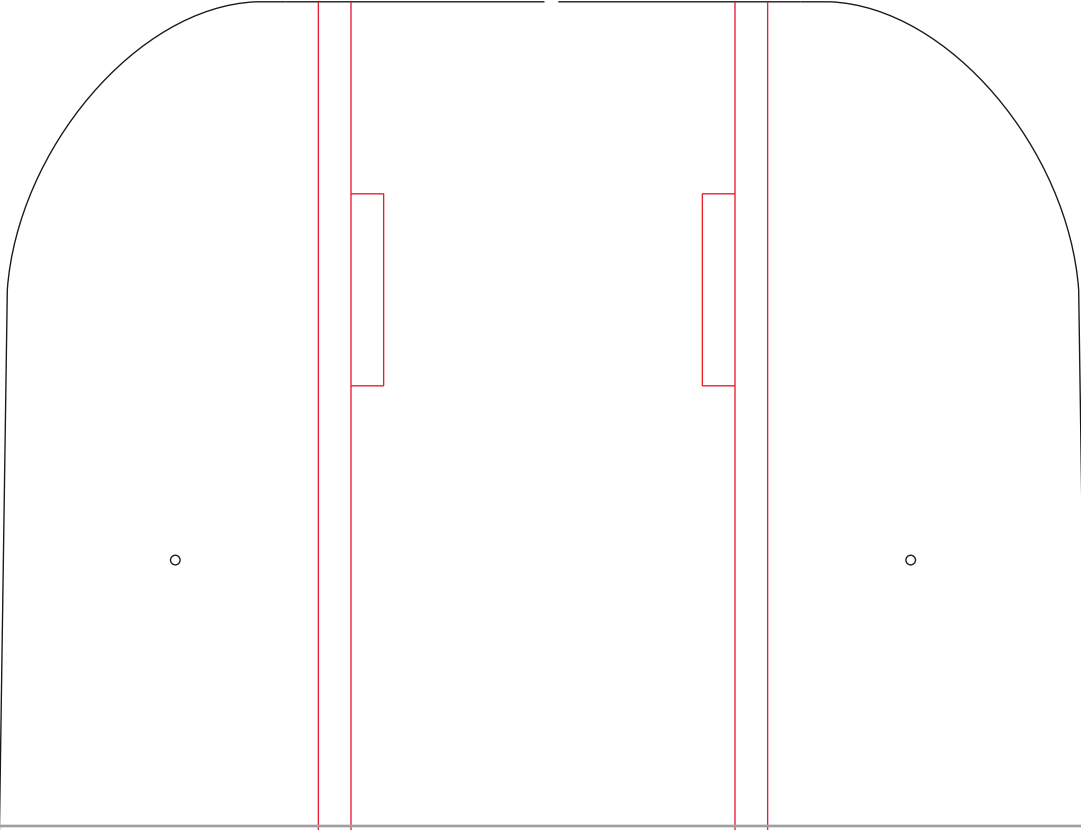


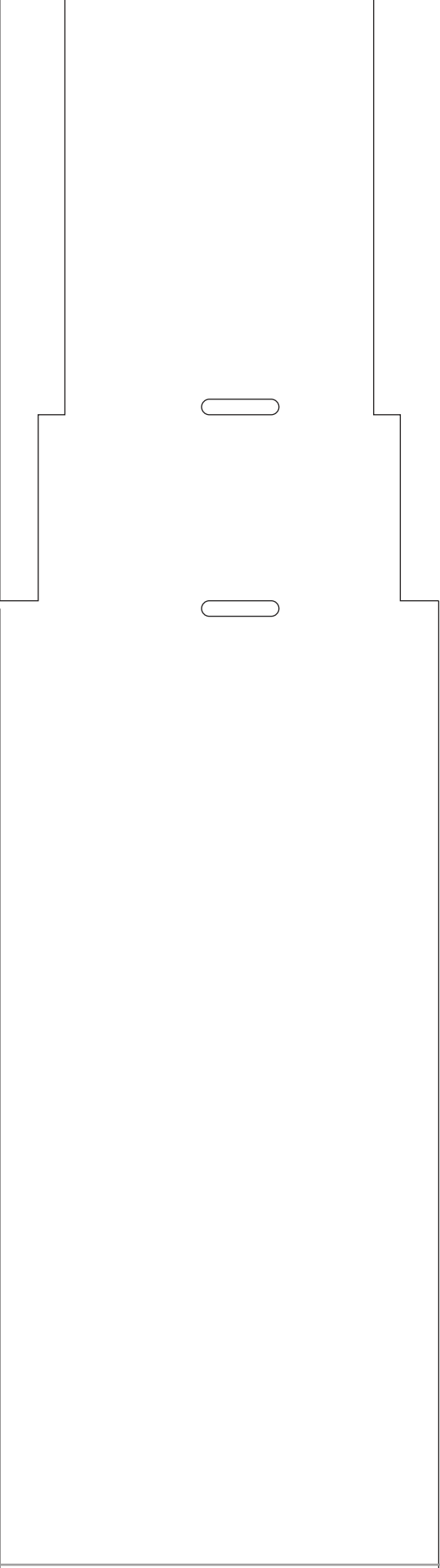
nose piece (x2)

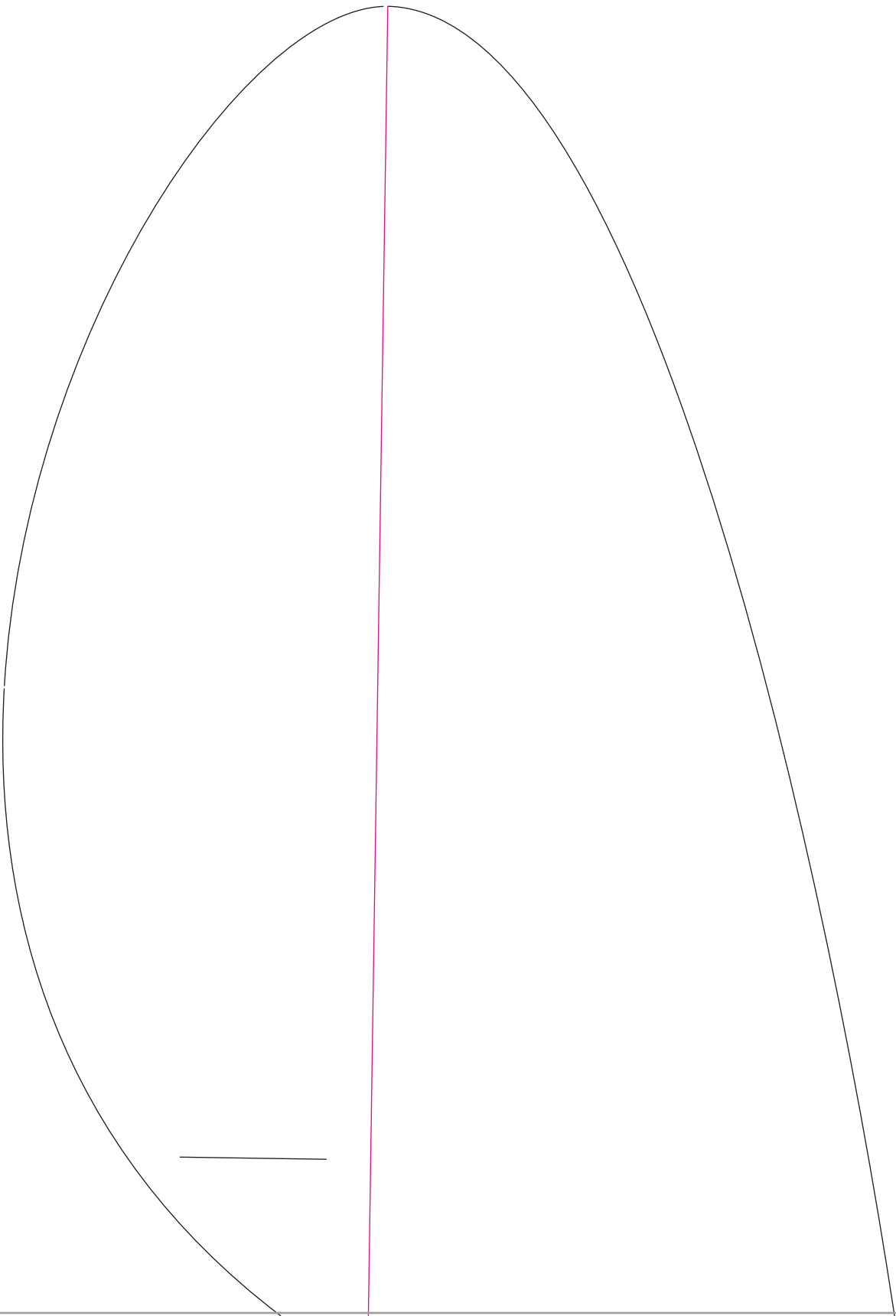




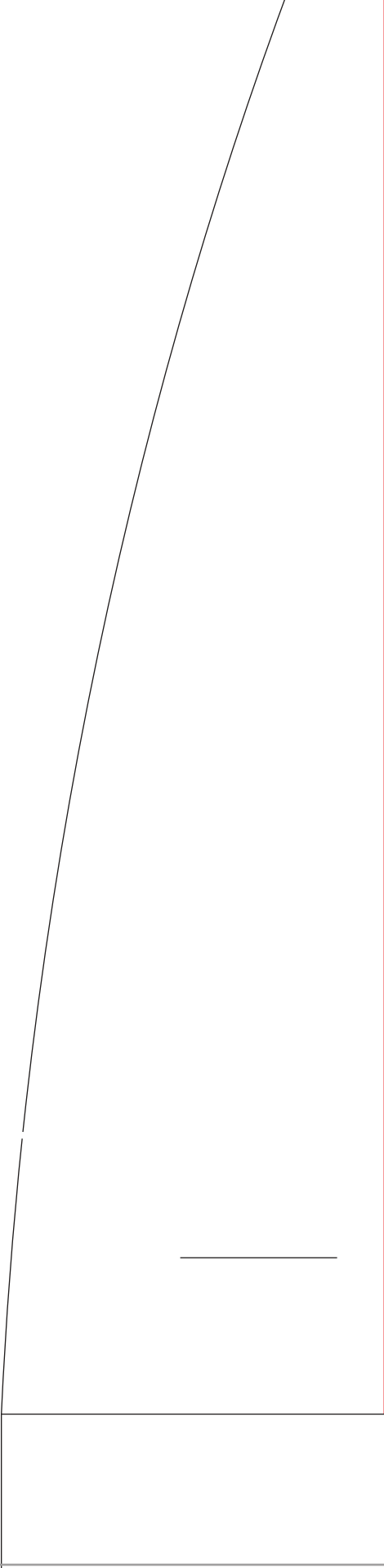
nacelle (x2)















\_\_\_\_\_

o

o

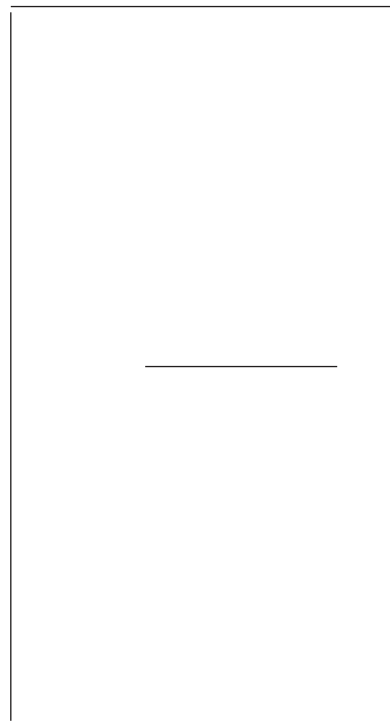
o



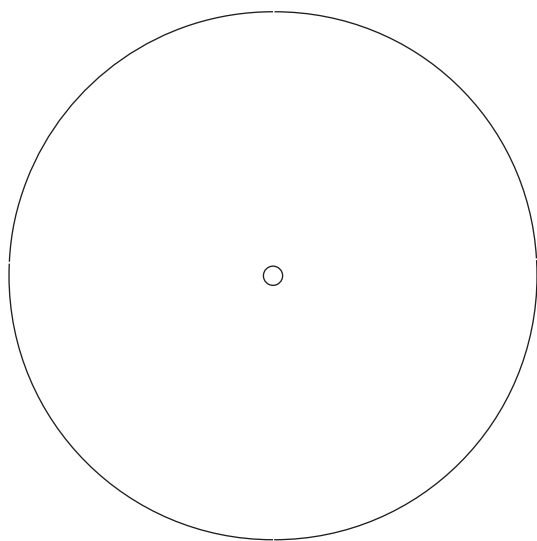
o

LB

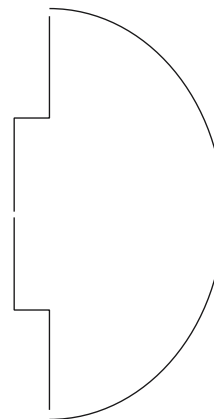
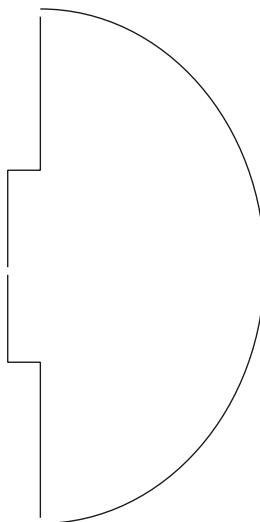
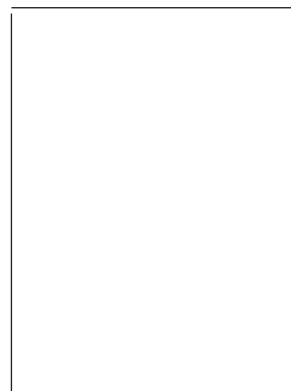
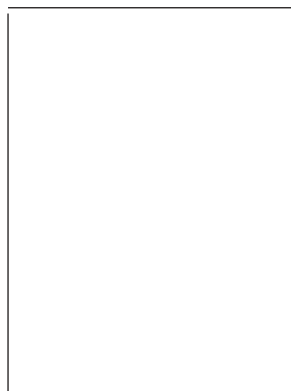
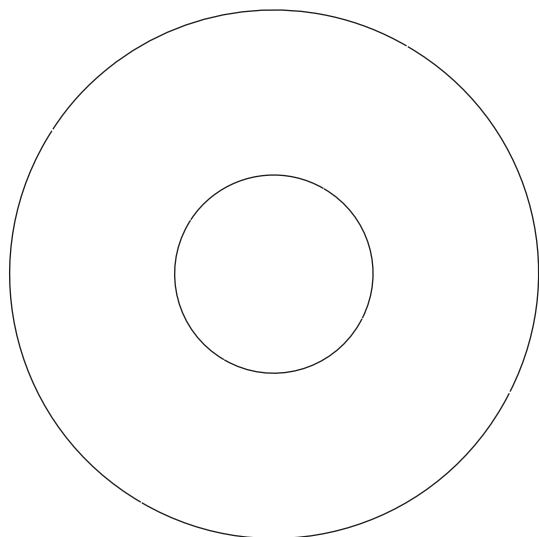
split flaps (x2)



inner wheel (x6)

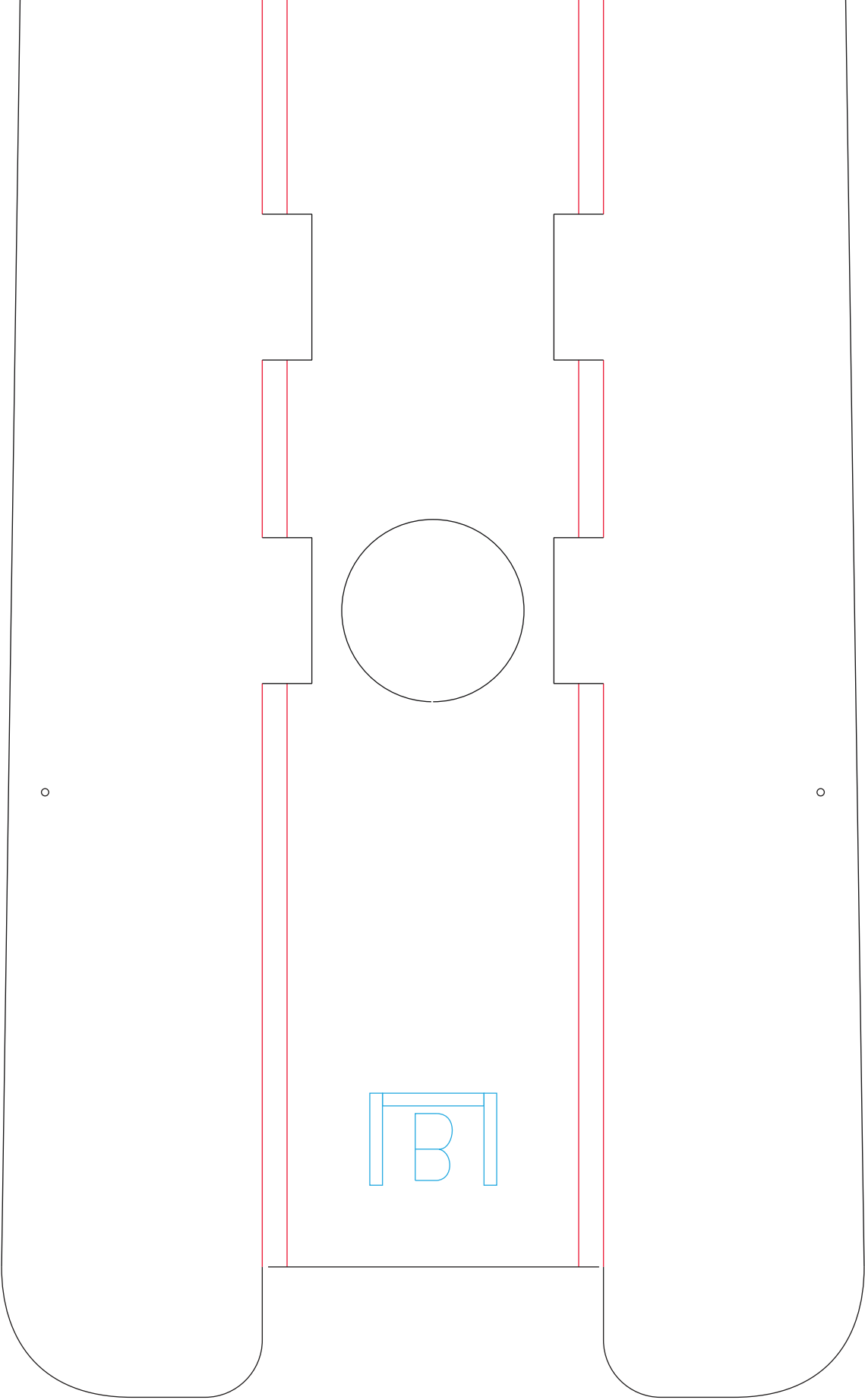


outer wheel (x2)

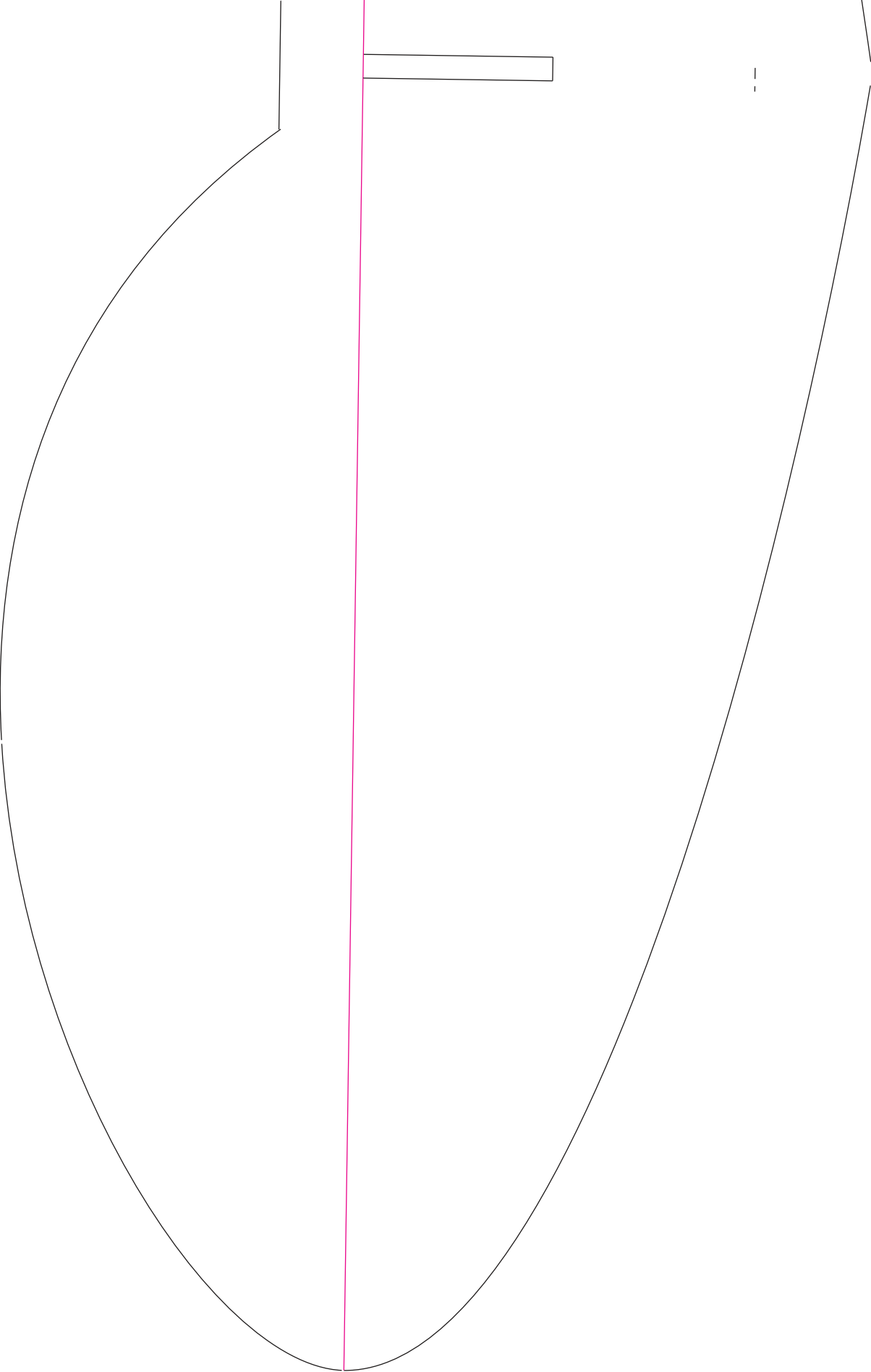


LB

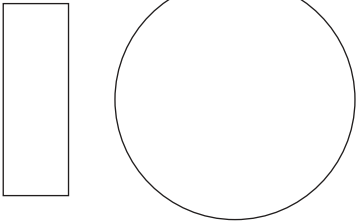








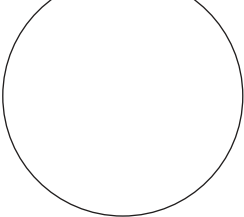
Total Wingspan - 49.75" (1264 mm)



o



- -  
- -



o



o

.

.

.

.



Total Wingspan - 49.75" (1264 mm)

